



LOAD FEEDER FUSELESS REVERSING DUTY,  
AC 400V, SZ S00, 1.4. . .2A,  
DC 24V SCREW CONNECTION FOR RAIL-MOUNTING,  
TYPE OF COORDINATION 2,  
IQ = 150KA (ALSO FULFILLS TYPE OF COORDINATION 1)  
1NC (CONTACTOR)

### General technical data:

Product brand name		SIRIUS
Product designation		non-fused load feeders 3RA2
Design of the product		reversing starter
Size of the load feeder		S00
Protection class IP / frontal/front side		IP20
Degree of pollution		3
Insulation voltage / rated value	V	690
Installation altitude / at a height over sea level / maximum	m	2000
Ambient temperature <ul style="list-style-type: none"> <li>during transport</li> <li>during storage</li> <li>during the operating phase</li> </ul>	°C	-55 ... 80 -55 ... 80 -20 ... 60
Impulse voltage resistance / rated value	kV	6
Real loss power / per conductor / typical	W	2.3
Item designation <ul style="list-style-type: none"> <li>according to DIN 40719 extendable after IEC 204-2 / according to IEC 750</li> <li>according to DIN EN 61346-2</li> </ul>		Q Q
Type of assignment		2

<b>Mechanical operating cycles as operating time / of the contactor</b> • typical		10000000
<b>Manufacturer article number</b> • of the circuit-breakers included in the scope of supply • of the contactor included in the scope of supply • of the link module included in the scope of supply		<a href="#">3RV2011-1BA10</a> <a href="#">3RT2015-1BB42</a> <a href="#">3RA1921-1DA00</a>
<b>Design of the switching contact</b>		mechanical
<b>Type of the motor protection</b>		bimetal
<b>Adjustable response current</b> • of the current-dependent overload release	A	1.4 ... 2

<b>Communication:</b>		
<b>Product function / bus-communication</b>		No
<b>Protocol / will be supported</b> • AS interface protocol • PROFIBUS DP protocol • PROFINET		No No No
<b>Product extension / function module for communication</b>		No

<b>Main circuit:</b>		
<b>Number of poles / for main current circuit</b>		3
<b>Number of NC contacts / for main contacts</b>		0
<b>Number of NO contacts / for main contacts</b>		3
<b>Operating voltage / at 3 AC / rated value / maximum</b>	V	690
<b>Operating current</b> • at AC-1 / at 400 V / rated value • at AC-2 / at 400 V / rated value • at AC-3 / at 400 V / rated value • at AC-4 / at 400 V / rated value	A A A A	2 1.9 1.9 1.9
<b>Service power</b> • at AC-2 / at 400 V / rated value • at AC-3 • at 400 V / rated value • at 500 V / rated value • at 690 V / rated value • at AC-4 / at 400 V / rated value	W  W W W W	750  750 750 1100 750
<b>Off-load operating frequency</b>	1/h	10000
<b>Switching frequency</b> • at AC-1 / according to IEC 60947-6-2 / maximum • at AC-2 / according to IEC 60947-6-2 / maximum	1/h 1/h	1000 750

- at AC-3 / according to IEC 60947-6-2 / maximum
- at AC-4 / according to IEC 60947-6-2 / maximum

1/h	750
1/h	250

#### Control circuit:

Type of voltage / of the controlled supply voltage

DC

Control supply voltage frequency

- 1 / rated value

Hz

0

Control supply voltage / 1

- for DC / rated value

V

24

Holding power / of solenoid / with DC

W

4

#### Auxiliary circuit:

Product extension / auxiliary switch

Yes

Number of NC contacts / for auxiliary contact

1

Number of NO contacts / for auxiliary contact

0

Number of change-over switches / for auxiliary contact

0

#### Inputs/ Outputs:

Number of digital inputs

0

#### Short-circuit:

Product function / short circuit protection

Yes

Design of the short-circuit protection

circuit-breakers

Breaking capacity limit short-circuit current (Icu)

- at 400 V / rated value
- at 500 V / rated value
- at 690 V / rated value

A

100000

A

100000

A

10000

#### Installation/mounting/dimensions:

Built in orientation

vertical

Type of mounting

screw and snap-on mounting onto 35 mm standard mounting rail

Width

mm

90

Height

mm

170

Depth

mm

97.1

Distance, to be maintained, to the ranks assembly

- forwards
- backwards
- upwards
- downwards
- sideways

mm

0

mm

0

mm

20

mm

30

mm

0

Distance, to be maintained, to earthed part

• forwards	mm	0
• backwards	mm	0
• upwards	mm	20
• downwards	mm	10
• sideways	mm	9
<b>Distance, to be maintained, conductive elements</b>		
• forwards	mm	0
• backwards	mm	0
• upwards	mm	20
• downwards	mm	10
• sideways	mm	9

### Connections:

#### Design of the electrical connection

- for main current circuit
- for auxiliary and control current circuit

screw-type terminals

screw-type terminals

#### Type of the connectable conductor cross-section

- for main contacts
  - unifilar
  - stranded wire
  - stranded wire
    - with conductor end processing
- at AWG-conductors / for main contacts
- for auxiliary contacts
  - solid
  - finely stranded
    - with wire end processing
- for AWG conductors / for auxiliary contacts

2x (0.75 ... 2.5 mm<sup>2</sup>), 2x 4 mm<sup>2</sup>

2x (0.75 ... 2.5 mm<sup>2</sup>), 2x 4 mm<sup>2</sup>

2x (0.75 ... 2.5 mm<sup>2</sup>)

2x (18 ... 14), 2x 12

2x (0.5 ... 1.5 mm<sup>2</sup>), 2x (0.75 ... 2.5 mm<sup>2</sup>), 2x 4 mm<sup>2</sup>

2x (0.5 ... 1.5 mm<sup>2</sup>), 2x (0.75 ... 2.5 mm<sup>2</sup>)

2x (20 ... 16), 2x (18 ... 14), 2x 12

### Certificates/approvals:

#### Verification of suitability

CE / UL / CSA / CCC

#### Varification of suitability / ATEX

No

### Safety:

#### B10 value / with high demand rate

- according to SN 31920

1000000

#### Failure rate (FIT value) / with low demand rate

- according to SN 31920

FIT

250

#### Proportion of dangerous failures

- with low demand rate / according to SN 31920
- with high demand rate / according to SN 31920

%

40

%

75

**T1 value / for proof test interval or service life**

- according to IEC 61508

a

10

**Protection against electrical shock**

finger-safe

#### Further information:

**Information- and Downloadcenter (Catalogs, Brochures,...)**

<http://www.siemens.com/industrial-controls/catalogs>

**Industry Mall (Online ordering system)**

<http://www.siemens.com/industrial-controls/mall>

**CAX-Online-Generator**

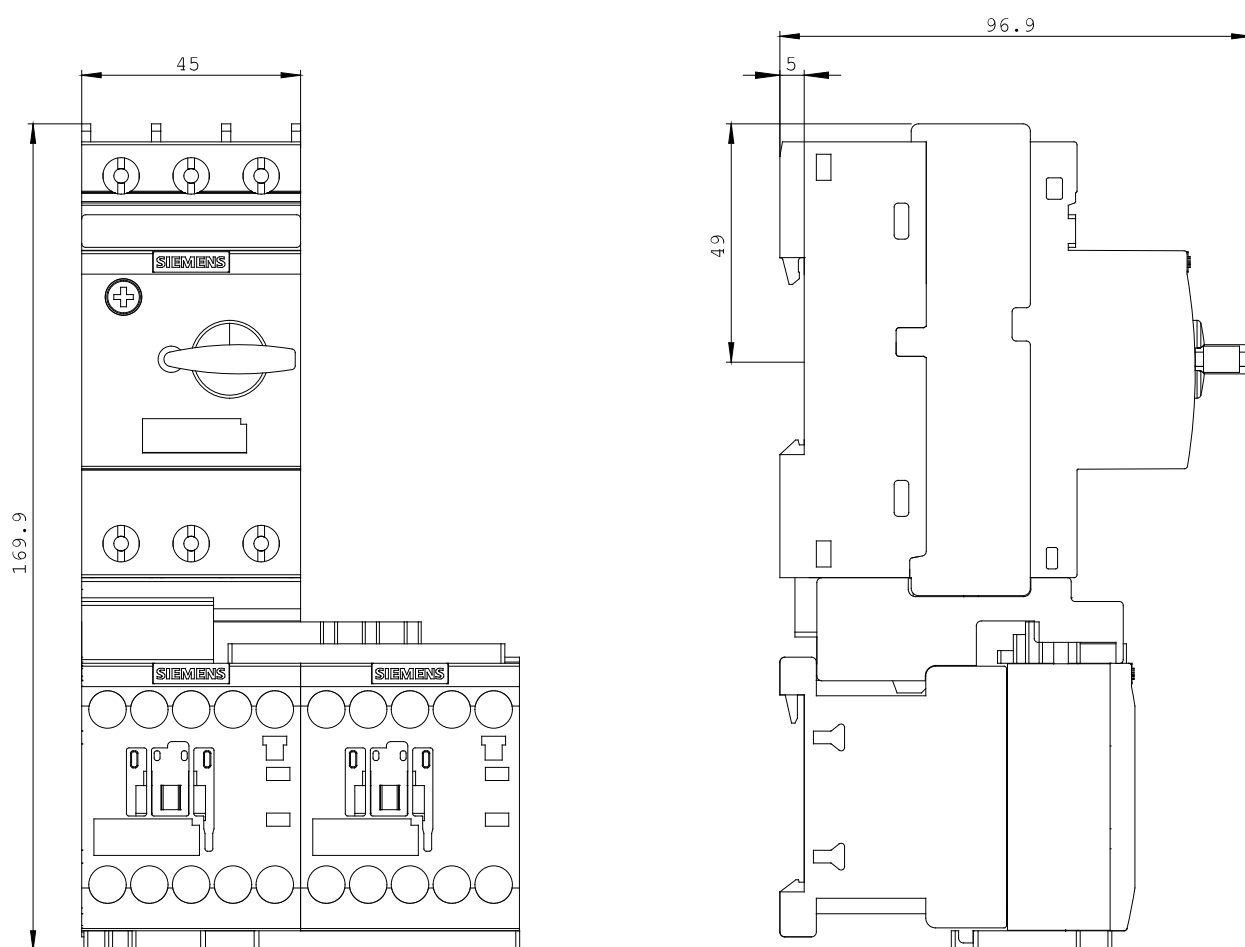
<http://www.siemens.com/cax>

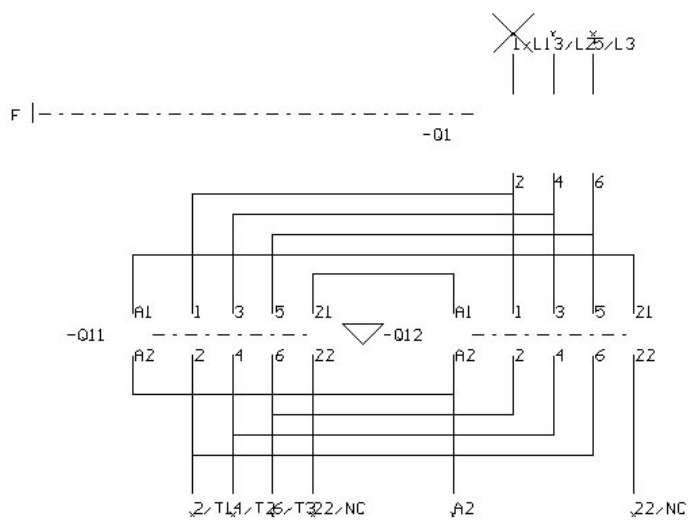
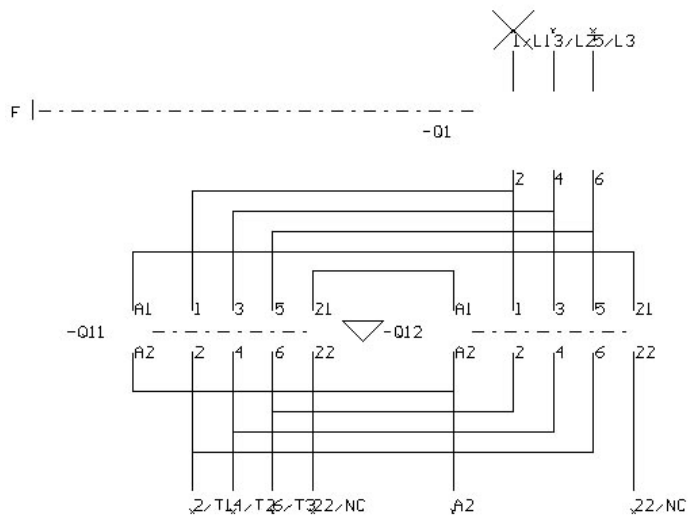
**Service&Support (Manuals, Certificates, Characteristics, FAQs,...)**

<http://support.automation.siemens.com/WW/view/en/3RA2210-1BA15-2BB4/all>

**Image database (product images, 2D dimension drawings, 3D models, device circuit diagrams, ...)**

[http://www.automation.siemens.com/bilddb/cax\\_en.aspx?mlfb=3RA2210-1BA15-2BB4](http://www.automation.siemens.com/bilddb/cax_en.aspx?mlfb=3RA2210-1BA15-2BB4)





last change:

Sep 20, 2010