



## Addendum 1

SCC - Tyger River Campus BMW Lighting Renovation

**Project Number:** H59-6297-JM-A

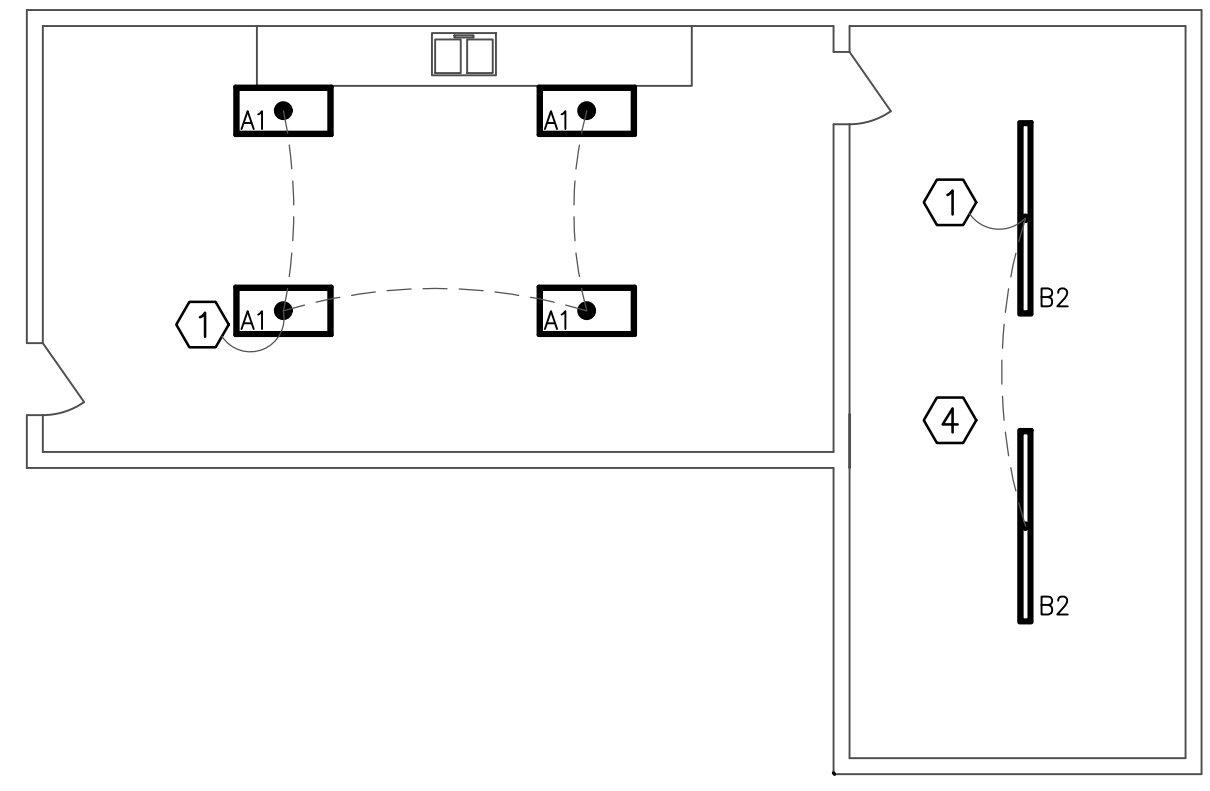
04/16/2024

**1)**

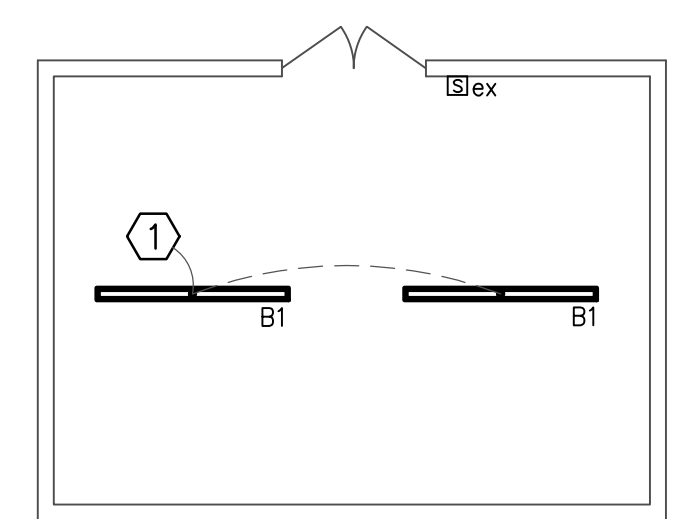
### **E-3.0 AREA A (CLASS AND SHOPS) LIGHTING PLAN**

- Revised fixture type for corridor outside of women's restroom 205 from 'A' to 'A1'
  - Revised fixture type for clouded fixtures in classrooms 301, 303, and 305 from type 'A' to 'A1'
  - Revised fixture type for Hall C from type 'A' to type 'A1'. Note the single fixture connecting Hall C to Hall B is revised from type 'A' to 'A3'.
- 2)** It is the contractor's responsibility to move all furniture as needed and to return it to where it was originally placed. SCC will move all electronic equipment.
- 3)** Quote date is unchanged. Quotes are due on Thursday 04/25/2024 @ 2:00P.M.
- 4)** All forms must be used as documented in the project manual.

This drawing is the property of Matrix Engineering, Inc., and is not to be reproduced or copied in whole or in part. It is only to be used for the project and site specifically identified herein and is not to be used on any other project. It is to be returned upon request.



**LIGHTING PLAN (MEZZANINE LEVEL)**  
SCALE: 1/8"=1'-0"



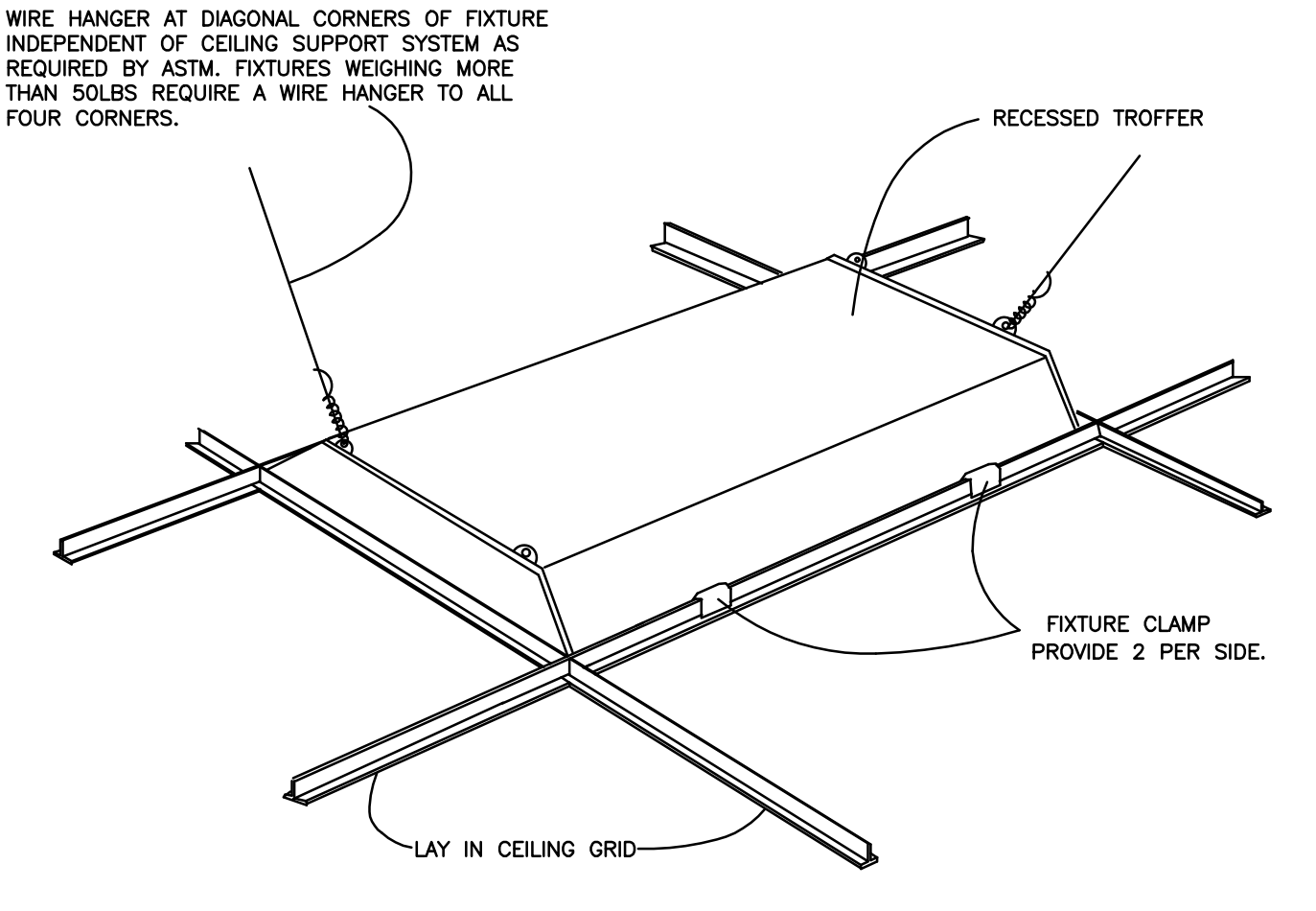
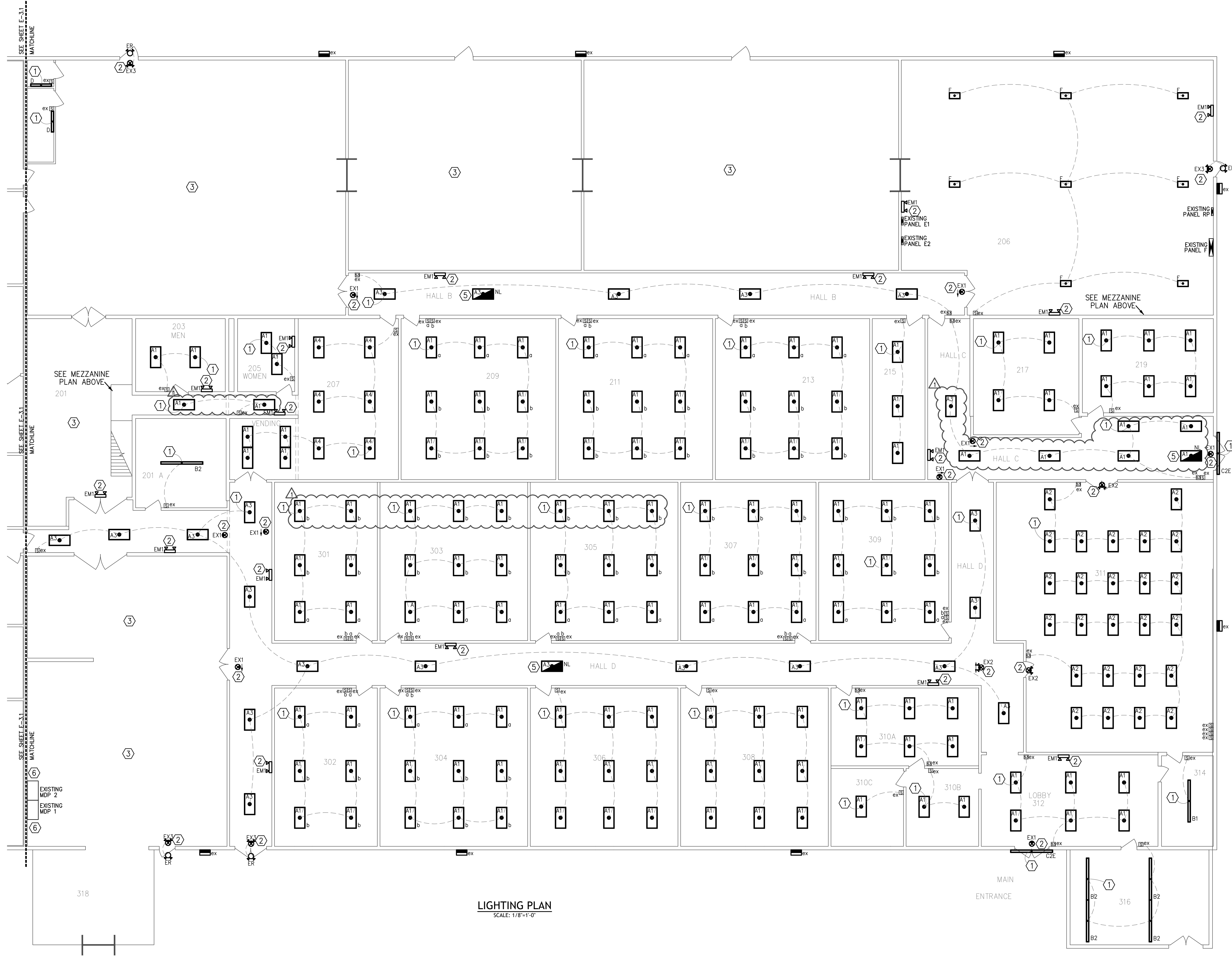
**LIGHTING PLAN (WELDING LAB 206 MEZZANINE LEVEL)**  
SCALE: 1/8"=1'-0"

**GENERAL LIGHTING PLAN NOTES:**

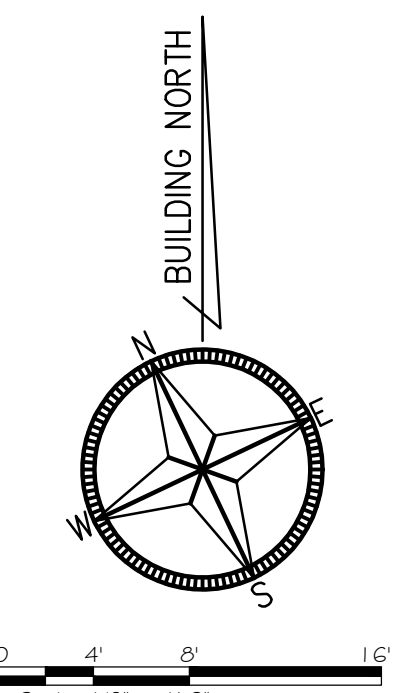
- ALL LIGHT FIXTURES SHALL MEET SEISMIC REQUIREMENTS OF ASCE 7.
- ALL LAY-IN LIGHT FIXTURES SHALL HAVE 12 GAUGE WIRE HANGERS PLACED ON DIAGONAL CORNERS ATTACHED DIRECTLY TO BUILDING STRUCTURE. ANY RECESSED LIGHT FIXTURE WEIGHING MORE THAN 50 LBS SHALL BE SUPPORTED FROM ALL FOUR CORNERS.
- LOWERCASE LETTER ADJACENT TO FIXTURE DENOTES SWITCH DESIGNATION.
- PANELS SHOWN ON THIS DRAWING ARE EXISTING TO REMAIN. SHOWN FOR REFERENCE ONLY.
- "ex" DENOTES EXISTING LIGHTING FIXTURE/DEVICE TO REMAIN.
- HALF SHADED LIGHT FIXTURES WITH AN "NL" BESIDE THEM DENOTES NIGHT LIGHT. WIRE FIXTURE "HOT" (UNSWITCHED).
- WIRE ALL BATTERY BACKED UP EXIST SIGNS AND EMERGENCY EGRESS DUAL HEAD FIXTURES "HOT" AHEAD OF ANY SWITCHING DEVICES.
- PROVIDE UNSWITCHED "HOT" WIRE TO ALL EMERGENCY AND EXIT FIXTURES FOR BATTERY CHARGING.

**KEYED LIGHTING PLAN NOTES:**

- DENOTE NEW LIGHTING TO BE WIRED TO EXISTING LIGHTING CIRCUIT WITH EXISTING LIGHTING CONTROLS TO REMAIN.
- DENOTES NEW EMERGENCY FIXTURE TO BE WIRED UNSWITCHED AND "HOT" TO EXISTING AREA LIGHTING CIRCUIT.
- DENOTES AREA WHERE EXISTING LIGHTING TO REMAIN.
- COORDINATE MOUNTING OF NEW FIXTURES WITH EXISTING DUCTWORK.
- DENOTES NEW FIXTURE WIRED "HOT" (UNSWITCHED) AS NIGHTLIGHT.
- DENOTES EXISTING ELECTRICAL SWITCHBOARD TO REMAIN.



**TYPICAL RECESSED FIXTURE MOUNTING DETAIL**  
NO SCALE



		PROJECT NO. <b>E-3.0</b>
		DATE 03-15-2024
SPARTANBURG COMMUNITY COLLEGE BMW TRAINING CENTER LIGHTING RENOVATION		REVISIONS:
1 04-02-2024 LIGHTING FIXTURE ADJUSTMENT ISSUED FOR PERMITTING AND CONSTRUCTION	0 03-15-2024	REV DATE DESCRIPTION
MATRIX ENGINEERING, INC. 115 SOUTH PINE STREET SPARTANBURG, SOUTH CAROLINA (864)553-6274 www.matrixinc.com		AREA A (CLASS AND SHOPS) LIGHTING PLAN
SCALE AS NOTED		SHEET NO. <b>E-3.0</b>
DATE 03-15-2024		PROJECT NO. 2024-057
FILE NAME E-3.0.dwg		REV 0